

Gigabit Ethernet with Colorlight RA5 series card tune-screen steps

I . Hardware connections and settings





Hardware connection diagram

1. Please use the Gigabit Ethernet Control RA5 synchronous cards, if you already have a network card, we can follow the following steps to determine the properties of network card .

Turn on the computer "Device Manager", observed the display of the "network adapter"

- A. If the NIC model contains with "GBE"/"Gibagit"/"10/100/1000", than this is Gigabit Ethernet.
 - B. If the NIC model contains with "FAST"/"FE", than this is Fast Ethernet.
2. Check whether the Gigabit Ethernet communications RA5 synchronous cards, Please view the status of computer bottom right corner of the "local connection"

A.  or  means that the communication is right, Double-click to view the speed, if the speed of 1.0Gbps, we can enter the software settings.

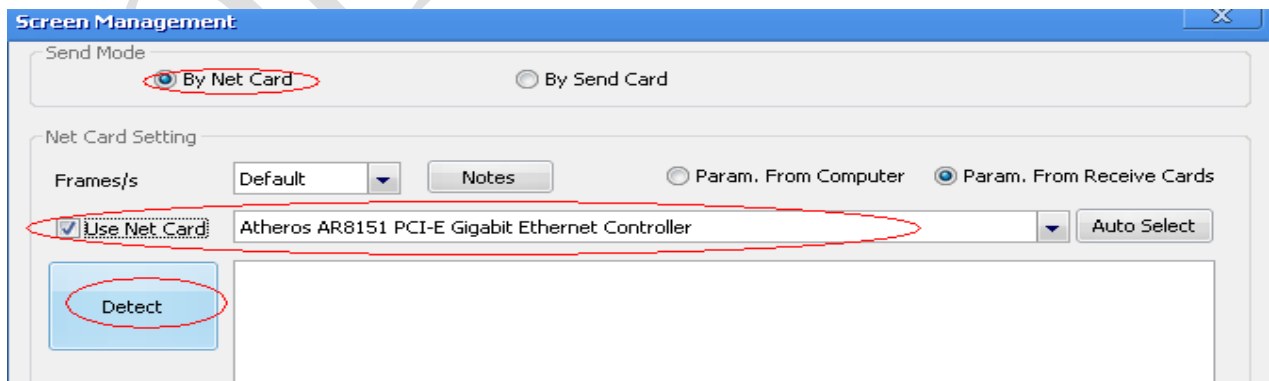
B.  means that the communication is wrong, please check:

- a) Please use Over five or Six types of cable, both ends of the crystal head in accordance with 568B of line sequence to produce, ensure that the network cable to the normal communication.

II . Software settings

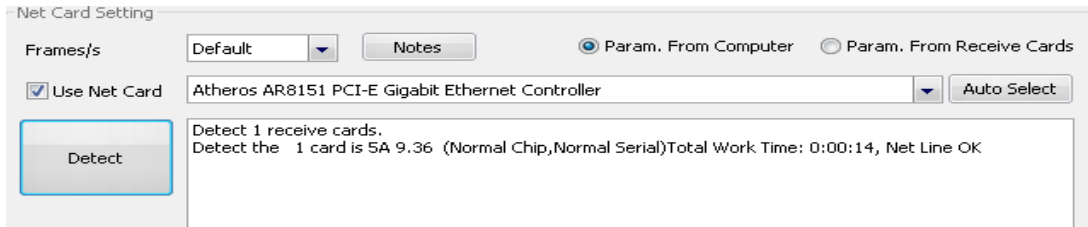
Installed correctly the "LEDVISION" software, enter "Card sent" mode settings.

- A. click **【Control】** → **【Screen management】**, open the "Screen management" page. Select "By Net Card", password is "168"



B. Select "Use Net Card", click "Auto Select", then blank menu appears the Gigabit Ethernet we used.

C. Click "Detect", the right area will appear as shown below:

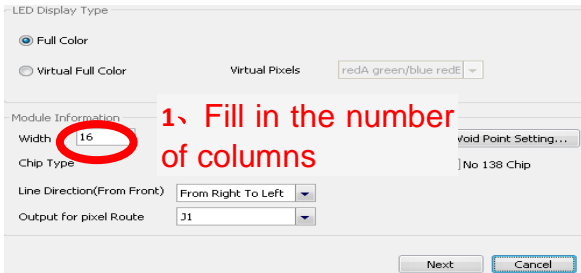


D. Click "Config Selected One", password "168", enter "Receive Card Setting LED1" page.

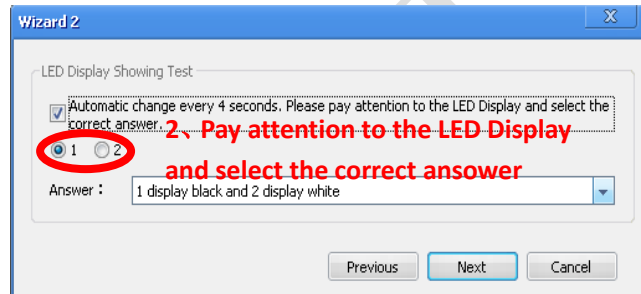
a) Basic Parameters Setting—"Intelligent Setting".

Click "Intelligent Setting", enter the setup wizard interface

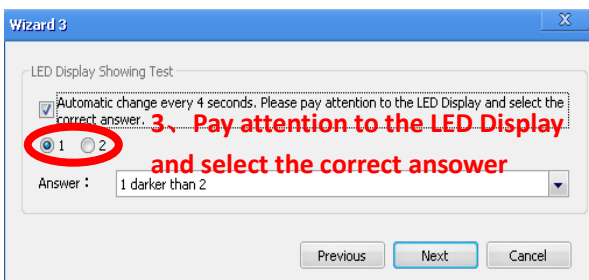
Wizard 1



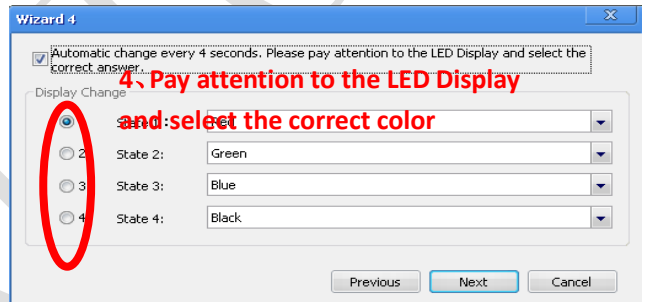
Wizard 2



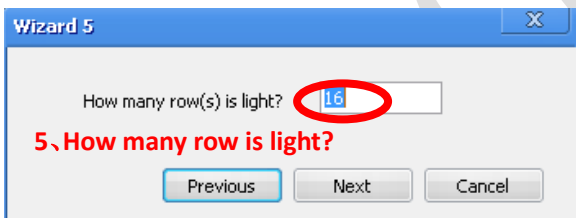
Wizard 3



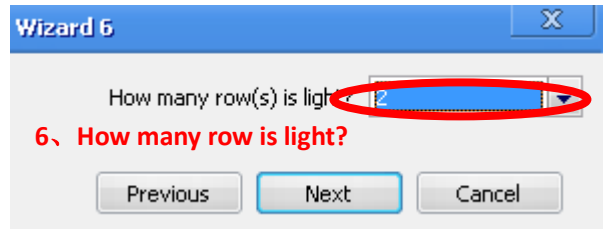
Wizard 4



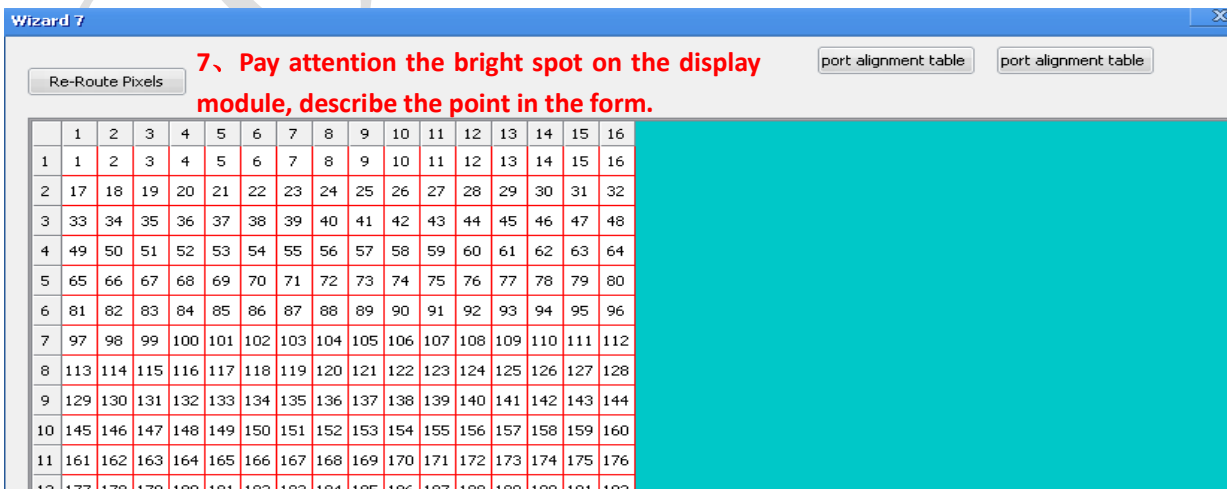
Wizard 5



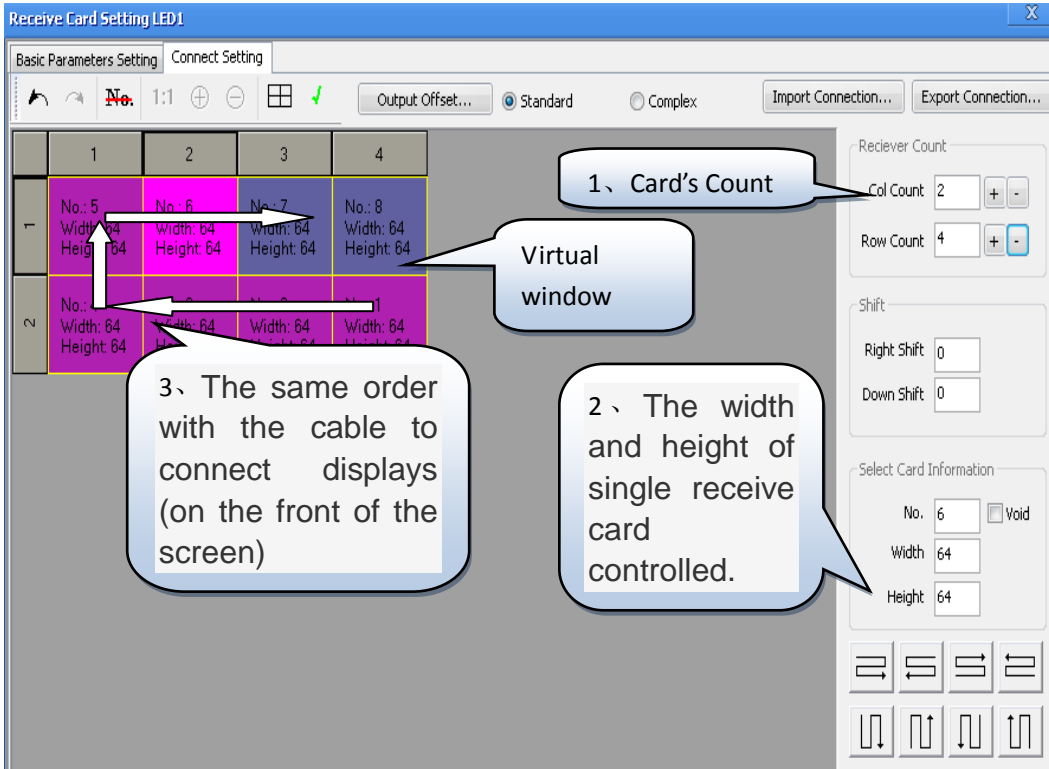
Wizard 6



Wizard 7



b) Connet Setting



The screenshot shows the 'Receive Card Setting LED1' software window. It has two tabs: 'Basic Parameters Setting' and 'Connect Setting'. The 'Connect Setting' tab is active, showing a grid of 2 rows and 4 columns of card settings. Each cell in the grid contains 'No.', 'Width: 64', and 'Height: 64'. To the right of the grid is a control panel with sections for 'Receiver Count' (Col Count: 2, Row Count: 4), 'Shift' (Right Shift: 0, Down Shift: 0), and 'Select Card Information' (No.: 6, Width: 64, Height: 64). There are also buttons for 'Import Connection...' and 'Export Connection...'. Three callouts provide instructions: '1. Card's Count' points to the Receiver Count section; '2. The width and height of single receive card controlled.' points to the Select Card Information section; '3. The same order with the cable to connect displays (on the front of the screen)' points to the grid.

c) Send to Receiving Card and Save the parameter.