



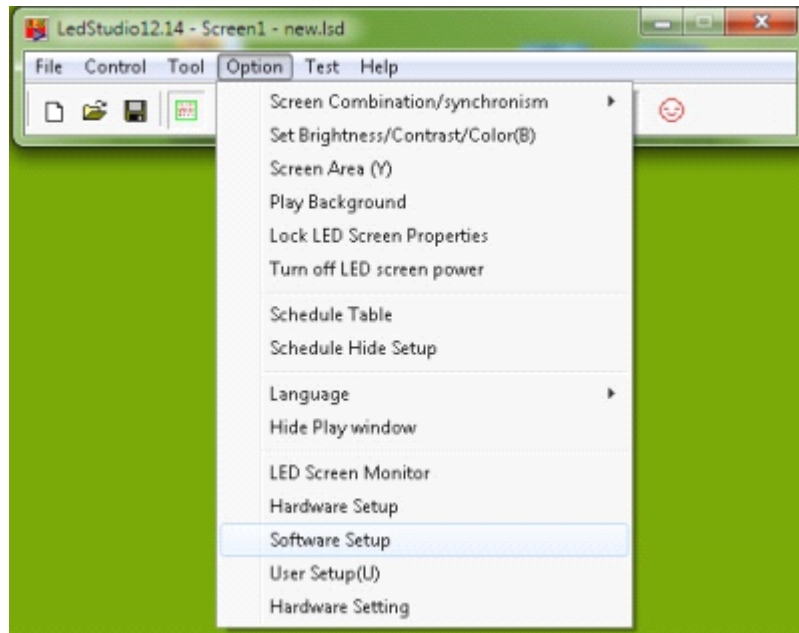
# SHENZHEN UNIT LED CO., LTD.

[LED CARD](#)   [LINSN](#)   [LED CONTROL SYSTEM](#)

Linsn System High-Refresh-Rate & High-Gray-Scale Setting working with general driver IC

Working with general driver IC, Linsn 8<sup>th</sup> G and 9<sup>th</sup> G control system could easily realize 4 to 32 times high refresh rate and 65536 level gray scale, starting from level 1, obtaining perfect image quality.

1. Open Led Studio, entering 'Option' and pick up 'Software setup' from that down-drawn menu.

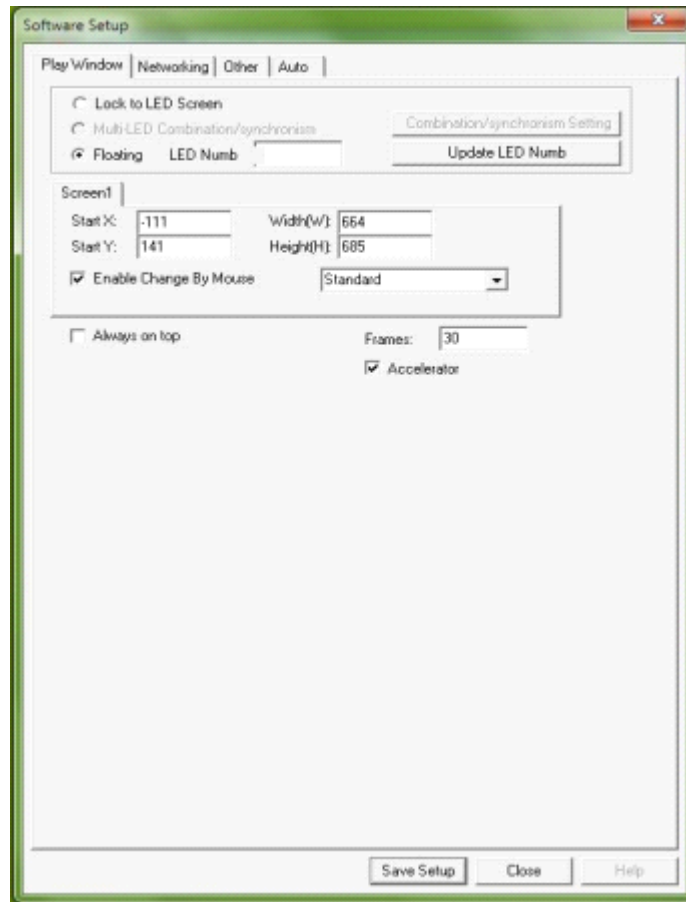


2. A new window pops-up, enter 'Linsn' from the keyboard (Nothing would show in your PC display)

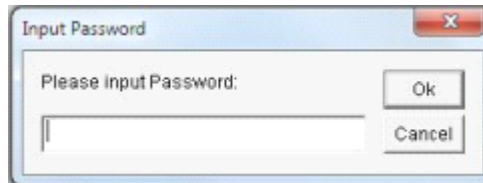


# SHENZHEN UNIT LED CO., LTD.

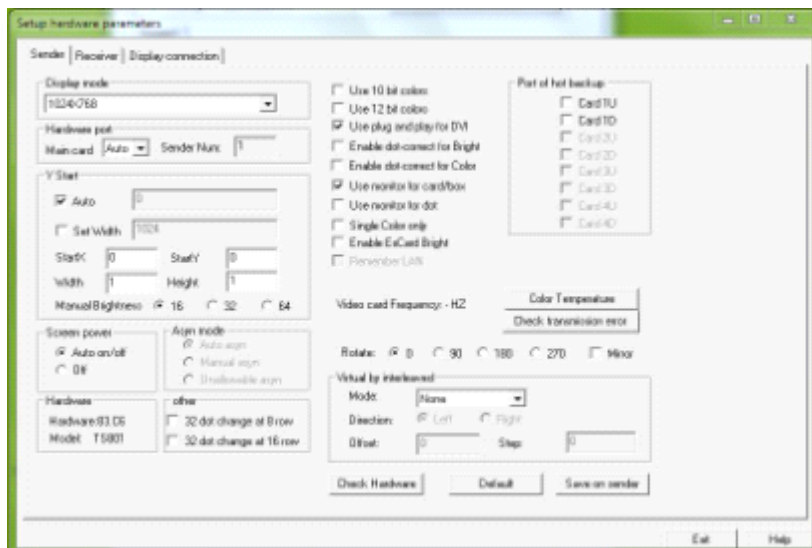
[LED CARD](#)   [LINSN](#)   [LED CONTROL SYSTEM](#)



3. There would be a pop-up dialogue box for password entering, the password is 168.

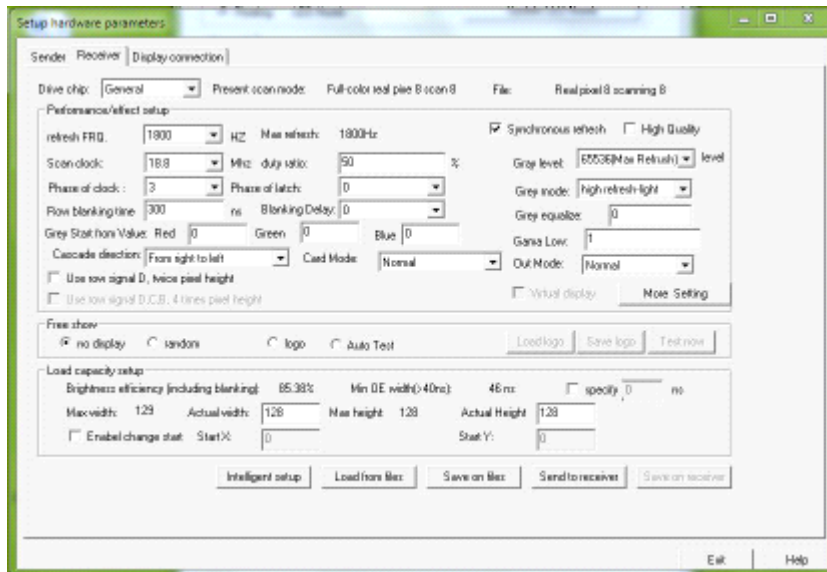


3. A new window for Setup Hardware Parameters shows up. Entering Receiver Card Page





4. Click the 'Receiver'



5. Pay attention to the upper-right corner, two boxes for choosing different gray level and fresh rate, generally high refresh-light and 65536(Quality) would be chosen.



You may notice that for each gray level we have four different effects, it is due to your choice, if you solely want to get very-high refresh rate, you may have to compromise some display effect on low gray scale region of the image or video, we recommend quality first for a better image quality of the whole image or video.

6. Click 'Send to receiver' and 'Save on files'.