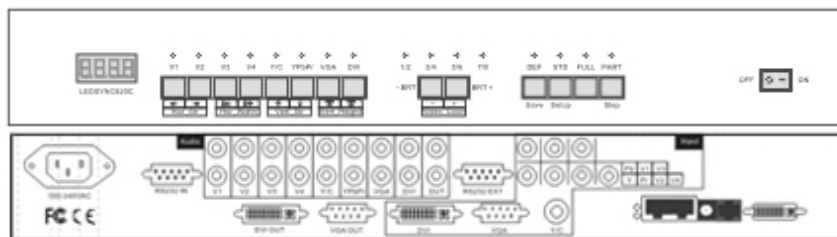


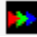
# LedSync82xx

## Instructions of Timing Control



## LedSync82xx Timing Control

---

- ◆ **LedSync82xx** is released with a Timing Control Software:  **LedSync.exe** , with this software, we can:
  - Operate **LedSync82xx** manually, or control it automatically by a Timing Control Plan
  - Switch the input source, Change brightness of output image or Switch picture display modes automatically
  - Timing Control Software can run on a local PC, and receive a Timing Control Plan from internet network
  - Timing Control Software can run on a remote PC, and send control commands directly to **LedSync82xx** by **TCP/IP**

### I. Applications

**LedSync82xx** as described in this manual represent the following models:

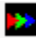
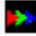
- **LedSync820B**
- **LedSync822**
- **LedSync820C**
- **LedSync822A**

### II. Control Mode

**LedSync82xx** can receive the operation commands from upper machine software to switch input source or change brightness of output image. **LedSync82xx** upper machine software provides 3 communication control modes below:

- **RS232** serial communication control by local PC
- **TCP/IP LAN** control by remote PC
- **TCP/IP WAN** control by remote PC

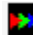
### III. RS232 Control

In this mode, user can manually operate **LedSync82xx** via RS232 control software:  **LedSync.exe** , or create Timing Control Plan to control **LedSync82xx** automatically.  **LedSync.exe** can carry out the following operations and control over **LedSync82xx**:

- Switch input source
- Change brightness of output image
- Switch picture display modes

In this mode, first, connect a available PC's COM port to **RS232 IN** port

## LedSync82xx Timing Control

of LedSync82xx , then run Timing Control Software:  LedSync.exe

### 1. User Interface

After the program runs, main user interface will appear in the screen, see Figure 1 below:

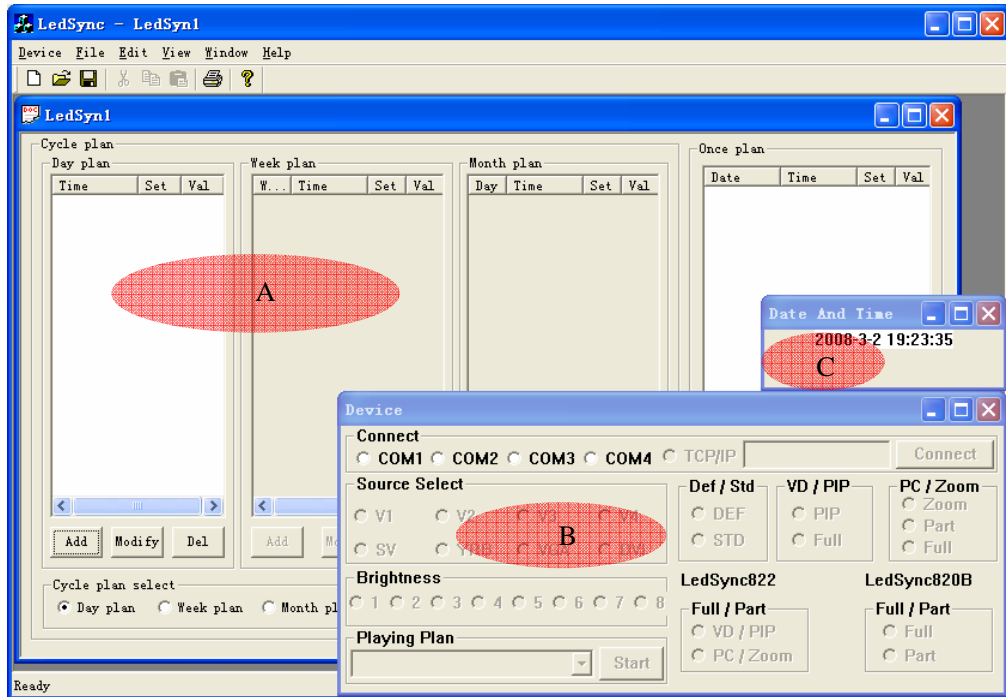


Figure 1

This interface consists of three parts: **A** , **B** and **C** .

**A** The dialog of editing a Timing Control Plan

**B** Manually control interface

**C** Current time

### 2. Manual Operation

User can manually operate LedSync82xx through interface **B**, e.g. switch input video source or change brightness of output image. See Figure 2:

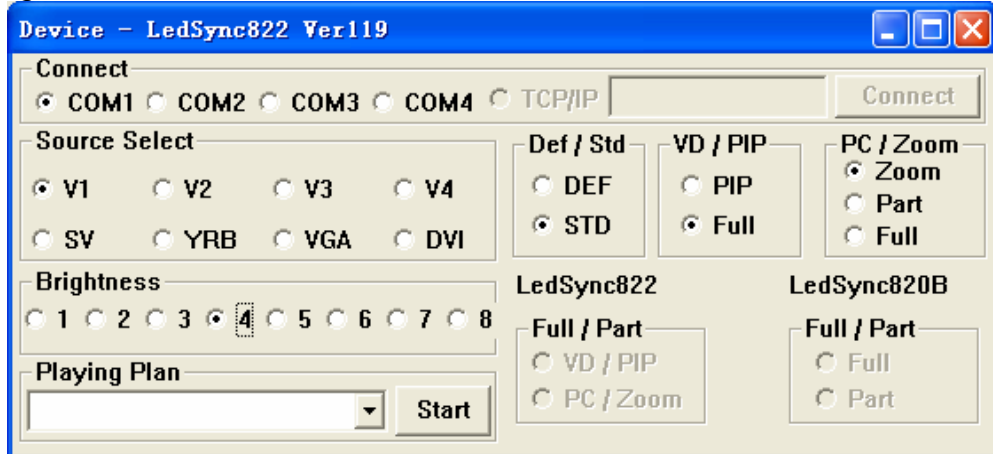


Figure 2

First, select the COM port to be connected to the device, such as **COM1**, then directly select input video source and brightness manually.

### 3. Timing Control

User can also prepare a Timing Control Plan. Software will automatically operate and control **LedSync82xx** based on the preset schedule, e.g. switch input video source or change brightness of output image. See Figure 3 for the samples of plan.

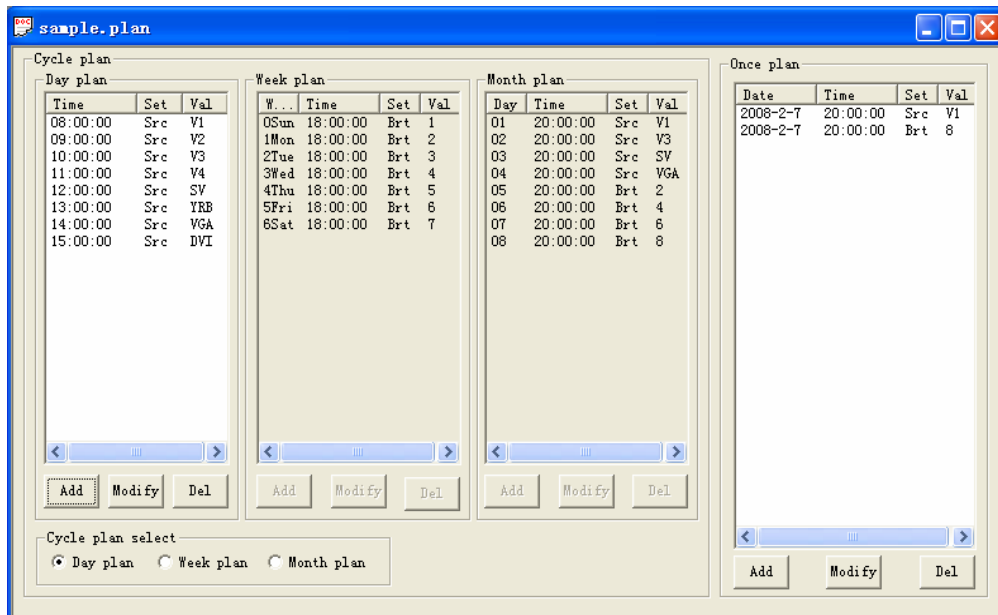


Figure 3

As above Figure shows, there are two types of plans:

- ◆ **Cycle Plan**
- ◆ **Once Plan**

Cycle Plan includes following three types:

- ◆ **Day Plan**
- ◆ **Week Plan**
- ◆ **Month Plan**

User can choose one on his/her demand.

**Day Plan** specifies hour, minute, second, each Day Plan can contain maximum 240 plan items;

A week has 7 days. **Week Plan** specifies week day, hour, minute, second, each Week Plan can contain maximum 7 x 240 plan items;

A month has 31 days. **Month Plan** specifies which day in the month, hour, minute, second, each Month Plan can contain maximum 31 x 240 plan items;

**Once Plan** specifies year, month, day, hour, minute, second, each Once Plan can contain maximum 360 plan items;

**Cycle Plan** and **Once Plan** can be placed in together. But there are three types of **Cycle Plan**, i.e. **Day Plan**, **Week Plan**, **Month Plan**, use can only place in one type of cycle plan together with **Once Plan**.

#### 4. Edit Plan

The items of each plan can be added, modified, deleted. See Figure 4 for details on how to add **Day Plan** item:

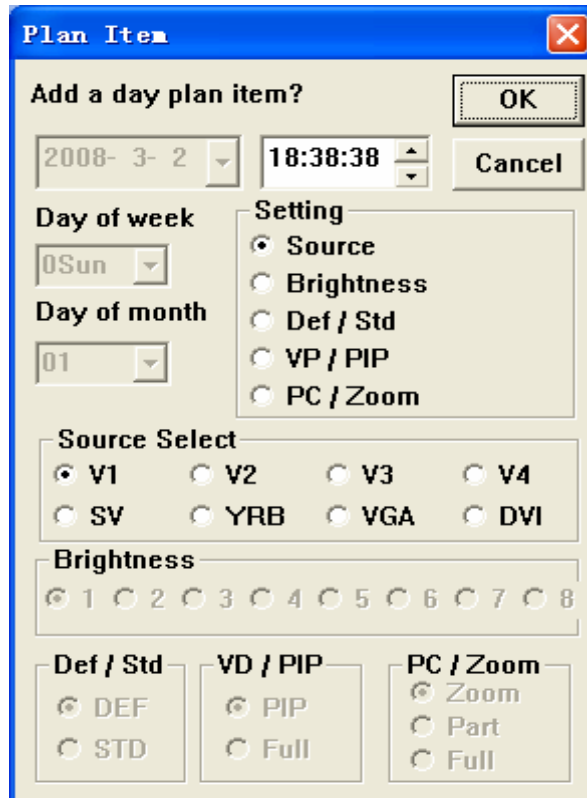


Figure 4

## 5. Select Plan

User can open and edit 6 plans simultaneously, and select any one opened plan to execute automatically. See Figure 5 for details on how to select **sample.plan (day)** plan:

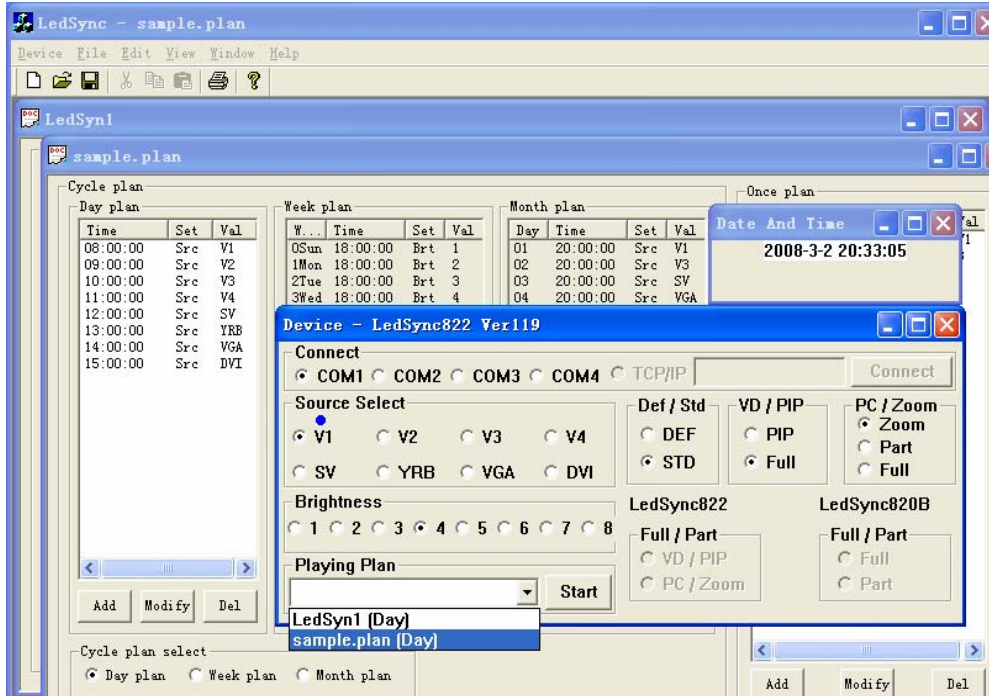


Figure 5

## 6. Start Plan

Select the plan to be automatically executed, click **Start** button, the system will execute it automatically, in the mean time, the button turns into **Stop**, the moment, if you click it, the system will stop executing the plan. See Figure 6:

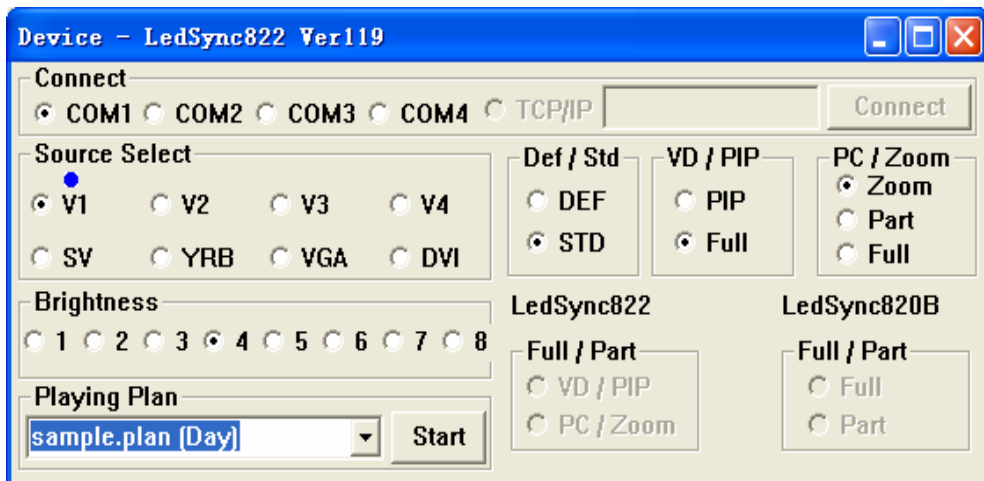
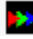


Figure 6

## IV. TCP/IP LAN Control

### 1. TCP/IP LAN Configurations

To realize remote control over **LedSync82xx** through LAN, **LedSync82xx** should be configured with **TCP/IP** → **RS232** conversion module: **C2000**. **C2000** is not included in standard configurations of **LedSync82xx**, user should separately acquire it when placing orders.

After **LedSync82xx** and **C2000** are properly connected, run software  **LedSync.exe**, and enter the interface as shown in Figure 7:

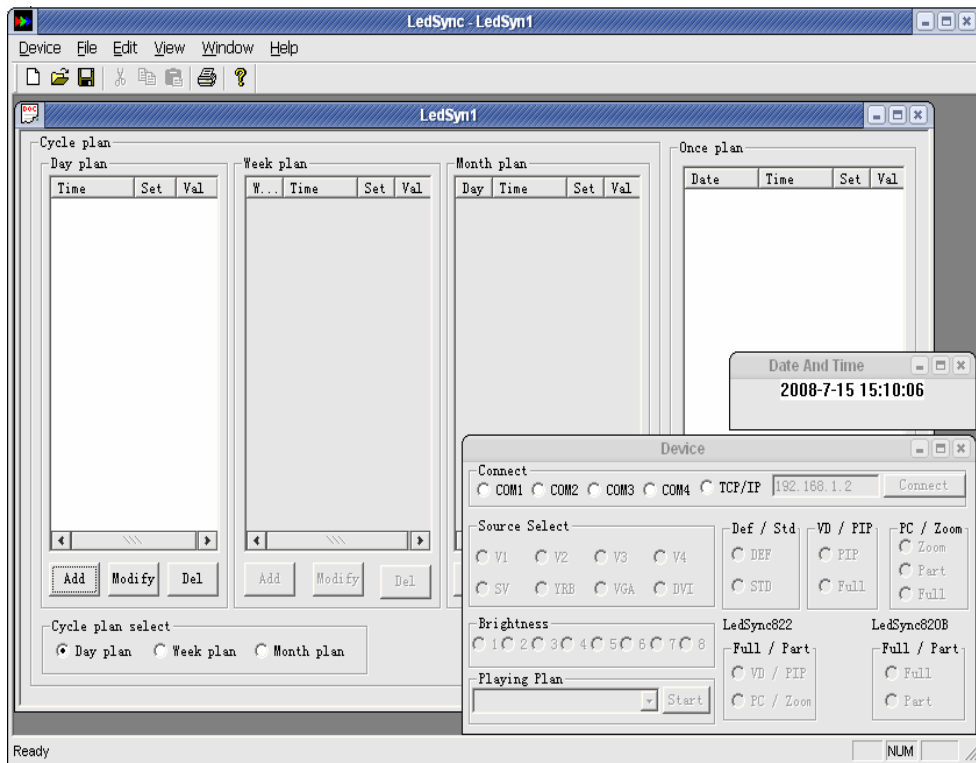


Figure 7



## LedSync82xx Timing Control

Click the menu **Device**→**Setup TCP/IP**, setup interface will appear in the screen. See Figure 8:

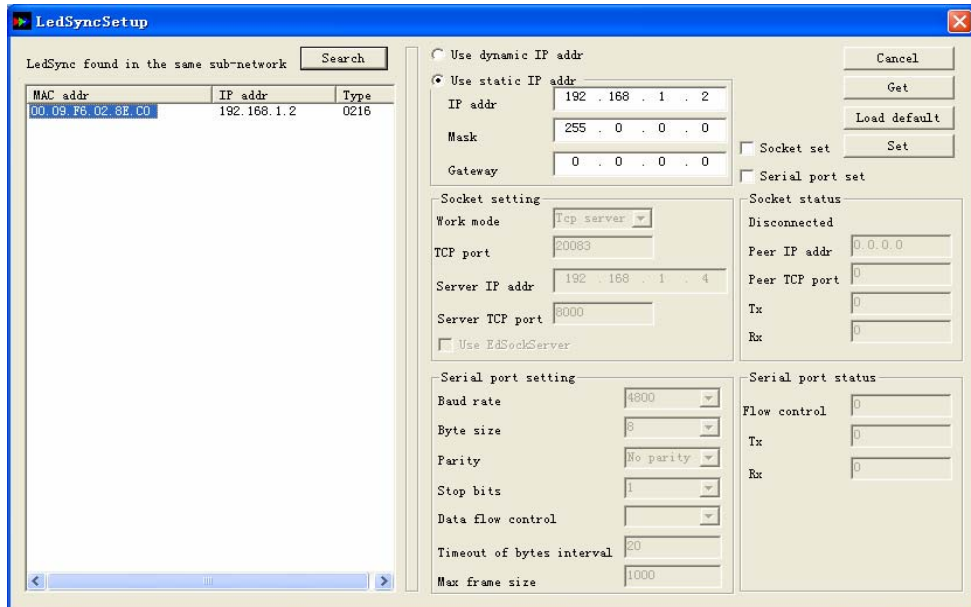


Figure 8

Click **Search** button, the moment the interface will prompt “finding the connected **C2000** converter“. Click **Get** button to obtain the net setup of device. Click **Load default** button to use default setup. Click **Set** button to change net setup of device.

**Caution:** while in **LAN** mode, please check the Internet **IP** setup of router. **IP** of **C2000** must be set in the same network segment.

After **C2000** setup is finished, return to device dialog box interface of **LedSync.exe** software. As shown in Figure 9 below, select TCP/IP in the column “Connect”, enter internal IP address of **C2000** in the address column. Click **Connect** button. When the connection is successful, the button turn into “DisConnect”.

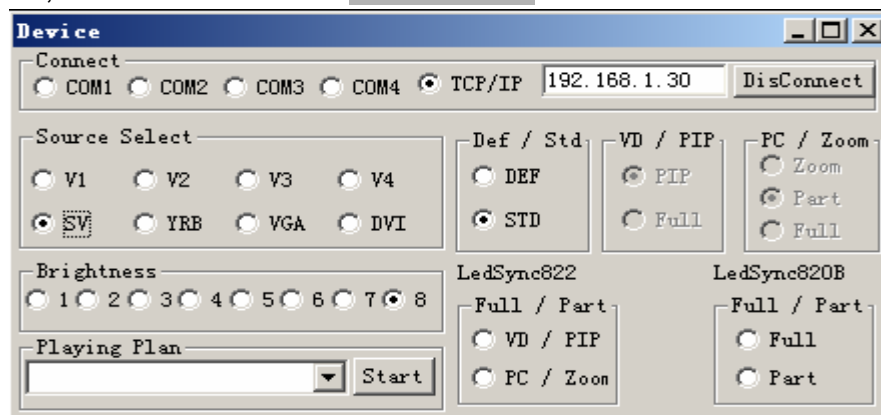


Figure 9

### **2. TCP/IP LAN Control**

When **TCP/IP** connection is successful, the way to control **LedSync82xx** is the same with that of **RS232** control mode. For details please refer to above sections (**III. RS232 Control**).