

## 3G Solution with led server

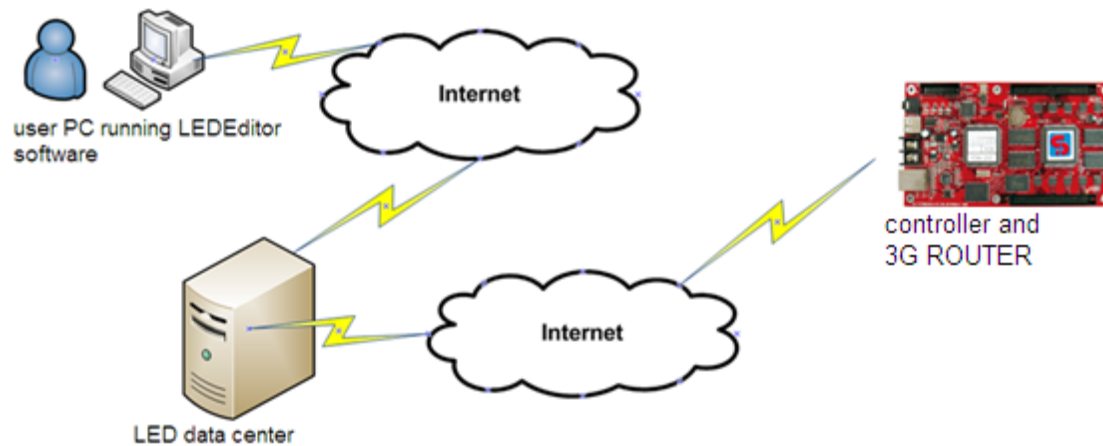
### Hardware:

1. M-series and G-series controller (M10, M20, M31, G31, G30)
2. 3G router, please prepare a 3G SIM card by yourself
3. Server---provided by Xixun Company or customer who builds their own server

### Software:

1. LedEditorv9 (LATEST VERSION FROM [www.ledsign.cc](http://www.ledsign.cc))
2. LedSet2.0
3. LedDataServer (for building server) ----provided by xixun Company
4. Static IP or DNS customer-side software---this for customer who builds their own server

### Connection diagram:



1. Controller gets access to internet via 3G router.
2. Control screen by multiuser in remote place. Different users have different permission.
3. Controller and user software message will be exchange in LED data center.

## Operation steps

Step1, run LedEditorV9 and enter Hardware setup, write down master name. Server Domain or Server IP, service port (50001) is defaulted by Xixun Company. But customers who build own Server needs to change these parameters.

Hardware setup

SCREEN ID: G30-222-00001

Refresh

IP parameter

IP address: 192.168.8.88

Subnet mask: 255.255.255.0

Default: 192.168.8.1

Serial port parameter

Serial: COM\_RS232

Baudrate: 57600

Link Server *this is default domain name*

Server Domain: www.ledm2m.net

Domain backup: [ ]

Server IP: [ ]

Custom Name: G30-222-00001

Service port: 50001 *press F6 it will appear*

Data center

Master: Jerry *write down user name and send*

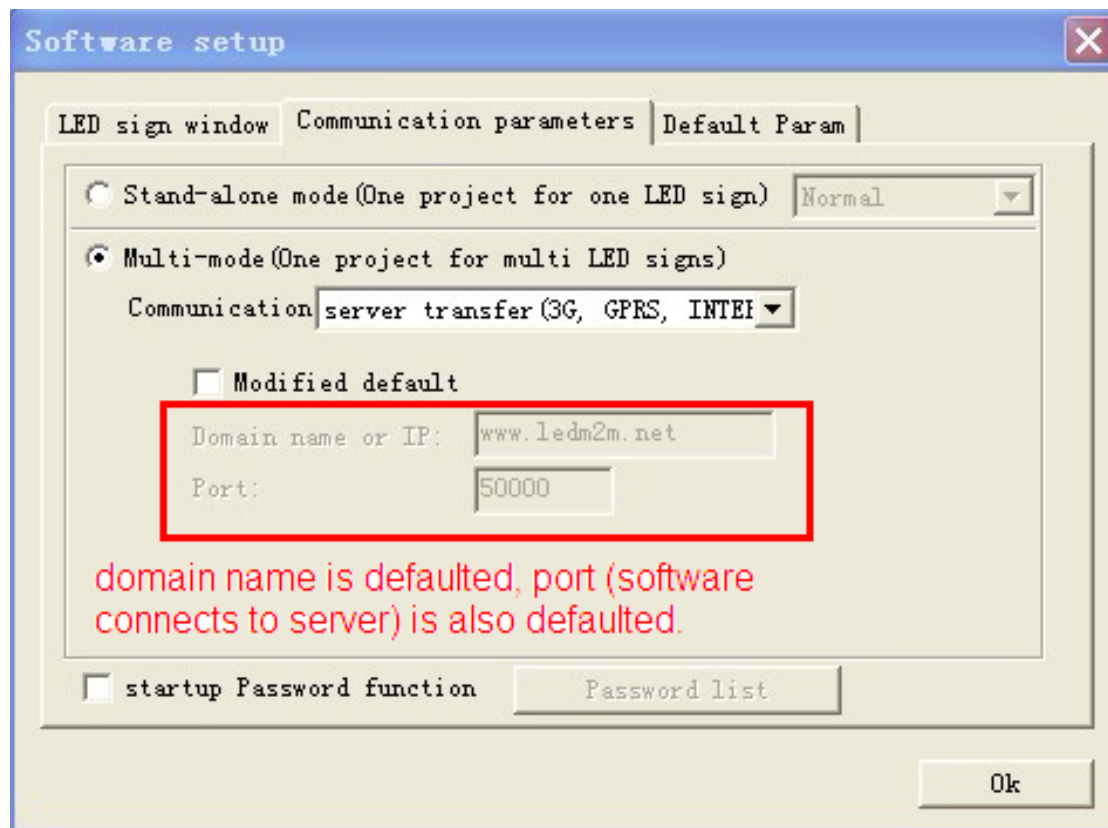
ID config(485 serial or RF): 1 (1~239)

ID[1-65535]: 1

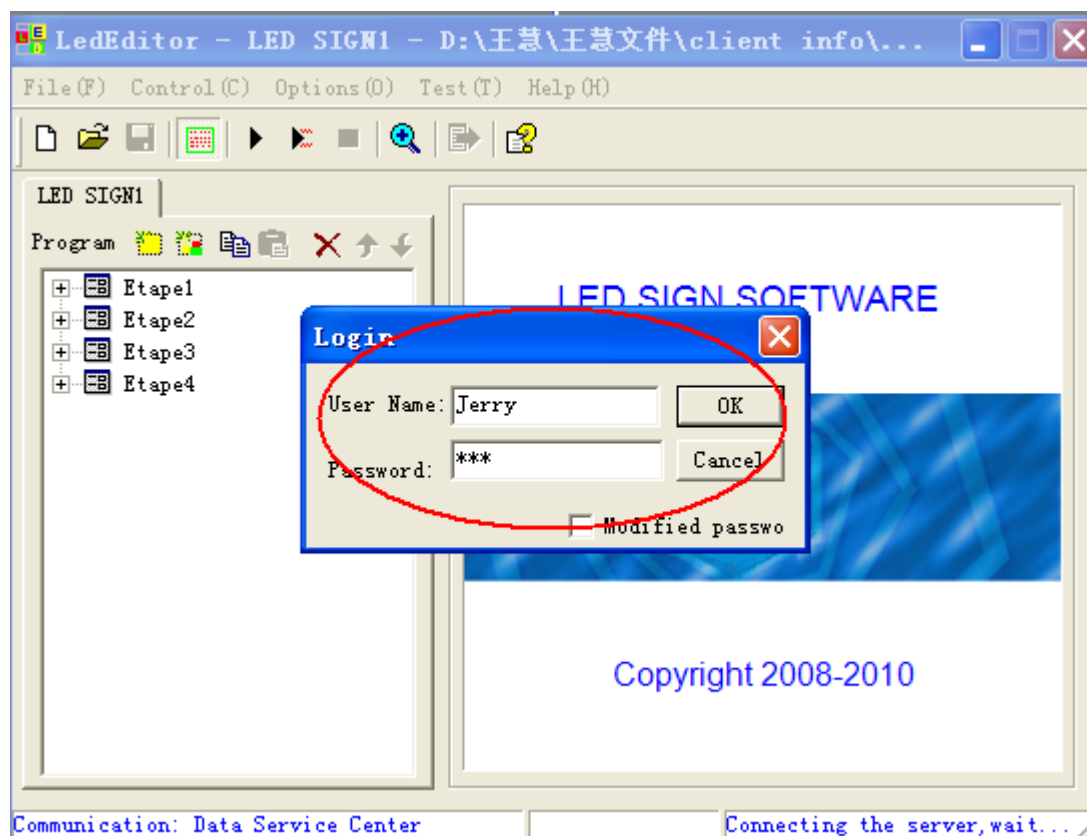
Other process

Close

Step2, select "server transfer (3G, GPRS, INTERNET)" under multi-mode in Software setup. Domain name or IP, port (50000) are defaulted by Xixun Company. Customers who build own server needs to change these parameters.



Step3, click on Send button and login user name and password.



Step4, check and send program after login.

Here, you will see all controllers under your username so that could control them at the same time.

