

## Instructions of RS 485 Solution for LED control system

With this new solution, one console will control multi-control cards in the same time and will not create any data flow fees. This solution is mainly applied in subway, bank and factory projects.

### 1. Traits:

1.1 Theoretically valid distance of RS485 modem could reach to 1200-3000 meters with the help of a kind of repeater. But without this repeater, we recommend customers make the distance range at between 300-800 meters.

1.2 Theoretically one RS485 console-modem could bring 32, 64, 128 or 256 control cards but it will also depends on the communicate chips of control cards and 485 modems. We recommend that one console-RS485 modem brings 80 control cards.

### 2. Preparation

Hardware: computer

Serial port cable

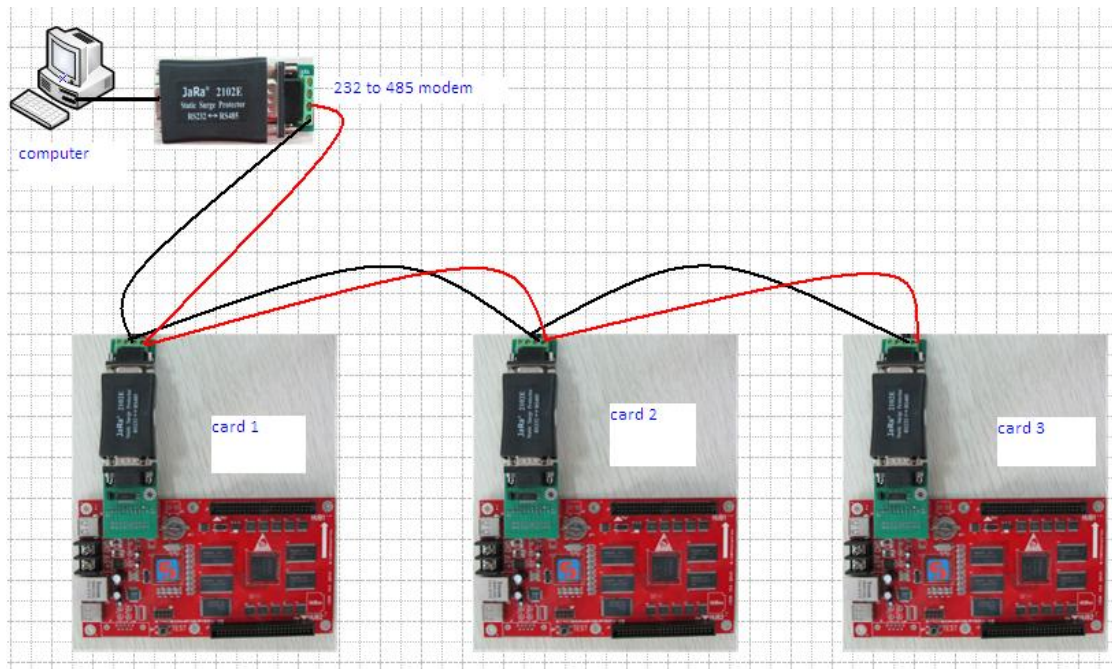
232/485 modem

Xixun control card (M-series, W-series)

Twisted pair

Software: LED editor software, LED set2.0 software.

### 3. Connection diagram:

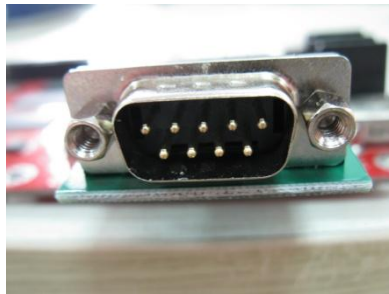
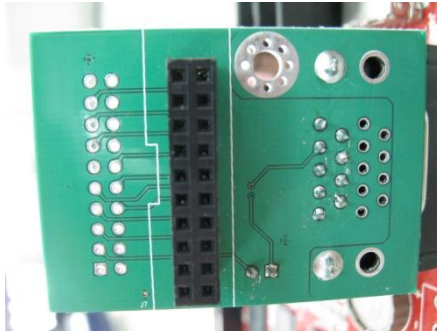


NOTE: Connect computer with 232/485 modem directly, because the com port in computer is male port while 232/485 is female port.

Customer could also connect 232/485 modem with computer via straight-through serial port cable, as shown in below:

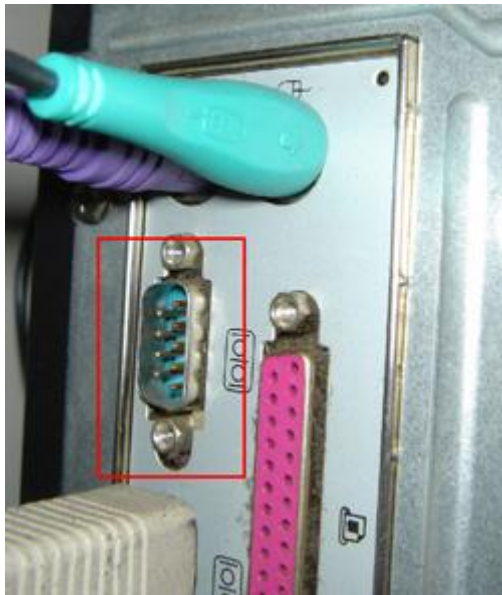


Connect 232/485 modem with card through the green modem, which is supplied by xixun company, as shown in below:



The red and black lines among 232/485 modems are should be twisted pair. Customers prepare these lines by themselves.

Computer serial port like this in below:



Now there are three cards, we can connect more cards in this way.

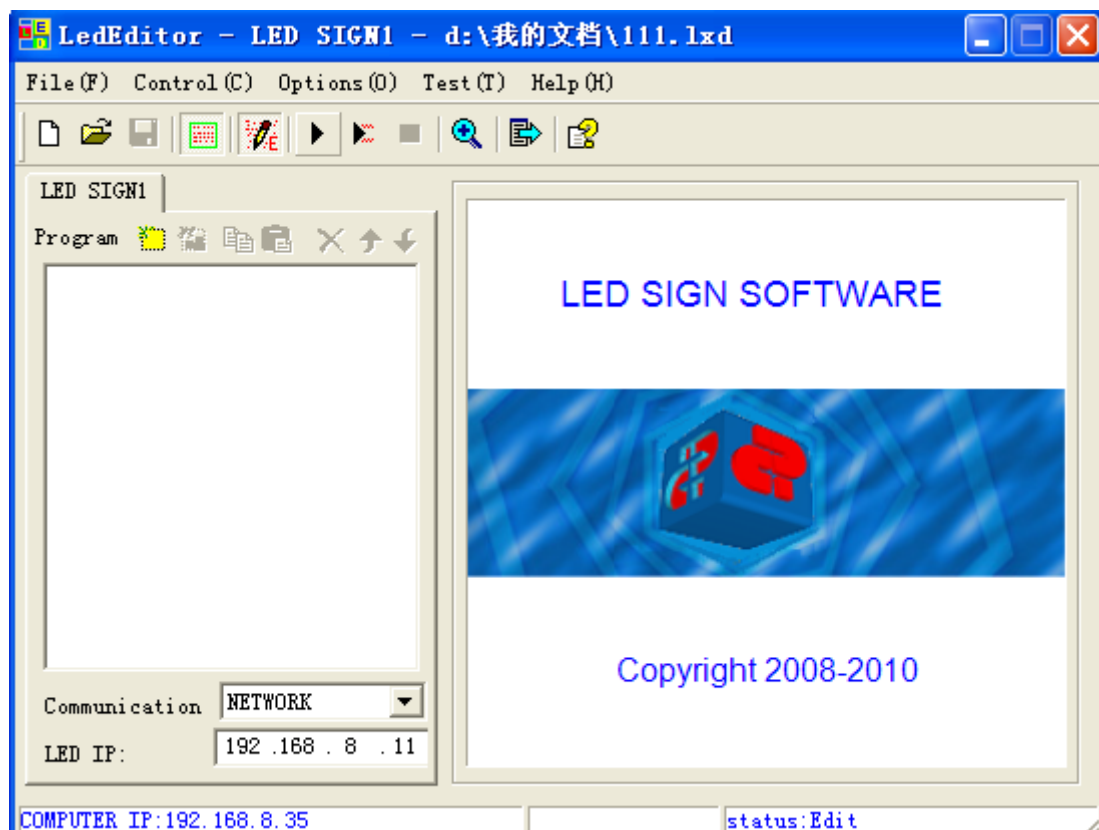
#### 4. Configuration steps

Step1, do setup for all cards by using LEDset2.0

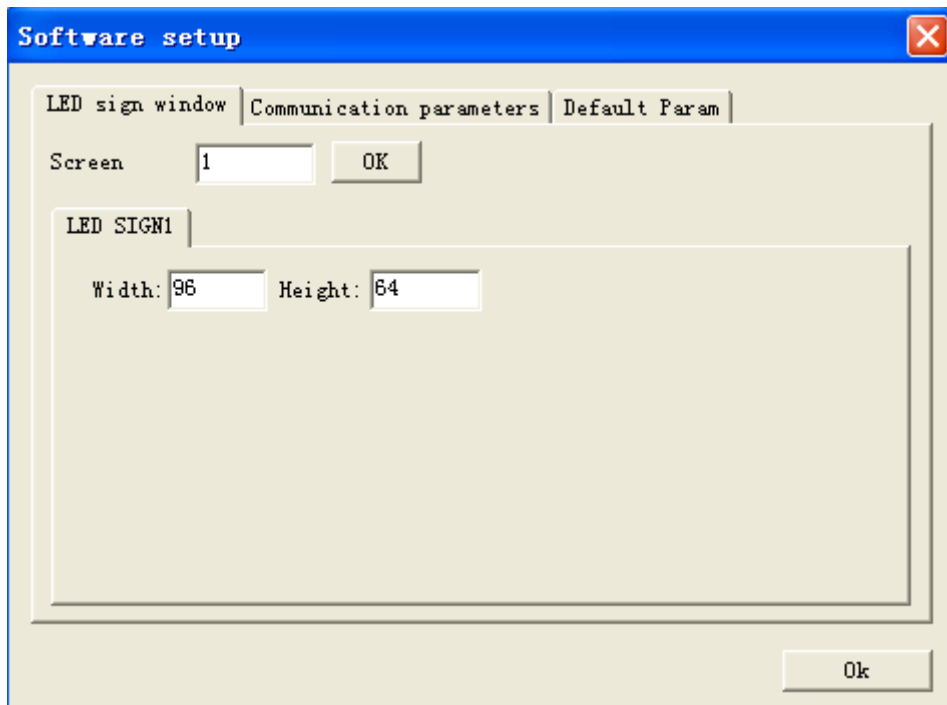
Take control card 1 for example, connect card 1 with computer through network cable. Then open LEDset2.0 software and detect control card IP.

Please click "Start Intelligent setup Wizard" then follow the step1, step2, step3 ..... to finish this wizard and you will get a HCP file. Please save this file in your computer. Please read Instruction of LEDset2.0 software for detail.

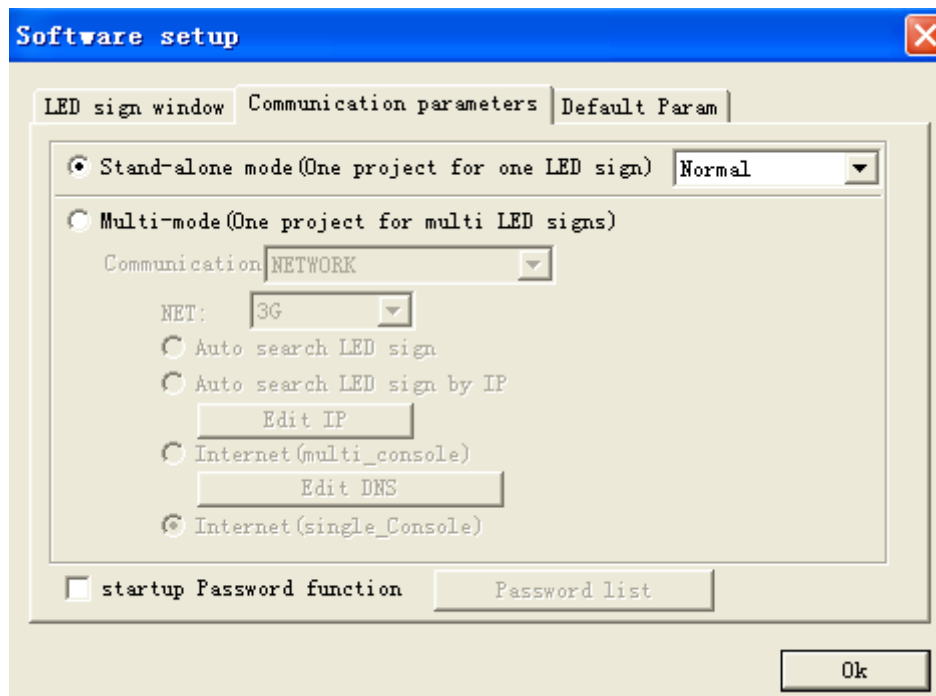
Step2, open LED editor software to set hardware parameters



Please open LED editor software then click on Options→software setup→LED sign window, here input the width and height pixels of led display.



Then click on Communication parameters→stand alone mode→Normal→OK



Back to software main interface then click on Options→Hardware setup→password: 888→

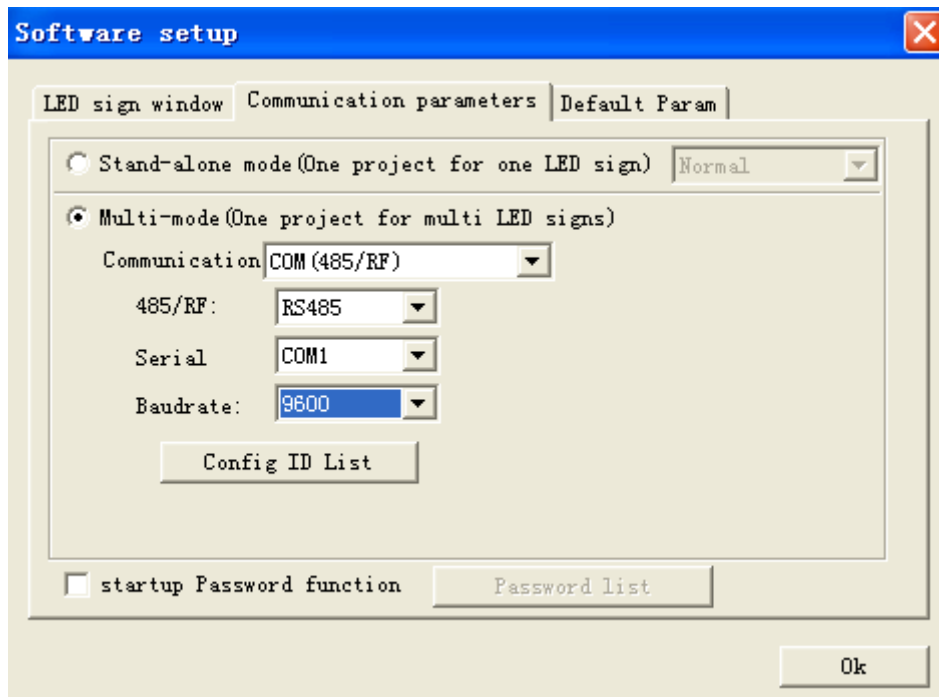
The screenshot shows a 'Hardware setup' window with the following configuration options:

- SCREEN ID:** M10-511-00436
- Refresh** button
- IP parameter** (radio button selected):
  - IP address: 192.168.0.200
  - Subnet mask: 255.255.255.0
  - Default: 192.168.0.1
  - Send** button
- Serial port parameter** (radio button selected):
  - Serial: COM\_TTL
  - Baudrate: 9600
  - Send** button
- Open internet mapping port** (checkbox): 31299 (1~65535) **Send**
- Link Server** (checkbox):
  - Server: Domain [ ] Domain backup [ ]
  - Server: IP [ ] Custom Name [ ] **Send**
- ID config(485 serial or RF)** (checkbox checked): 36 (1~239) **Send**
- Other process** (checkbox)
- Close** button

Please choose COM\_TTL and set the baud rate at 9600. Then click on Send button.

Here, please pay attention to ID config (485 serial or RF), please set an ID number for card1. The software will have a default ID; customer could also set by themselves. After set ID, please press Send button.

Step3, then back to Main interface and click on Options→software setup→communication parameters→multi-mode, as shown in below: password is 888.



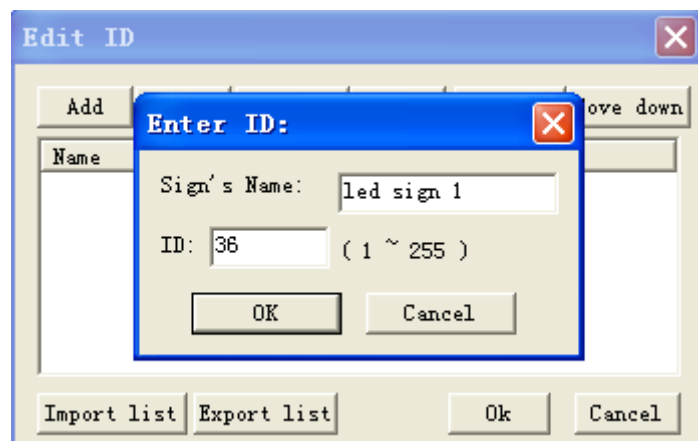
Communication: com (485/RF)

485/RF: choose 485


Serial: it is computer's com port, choose right one

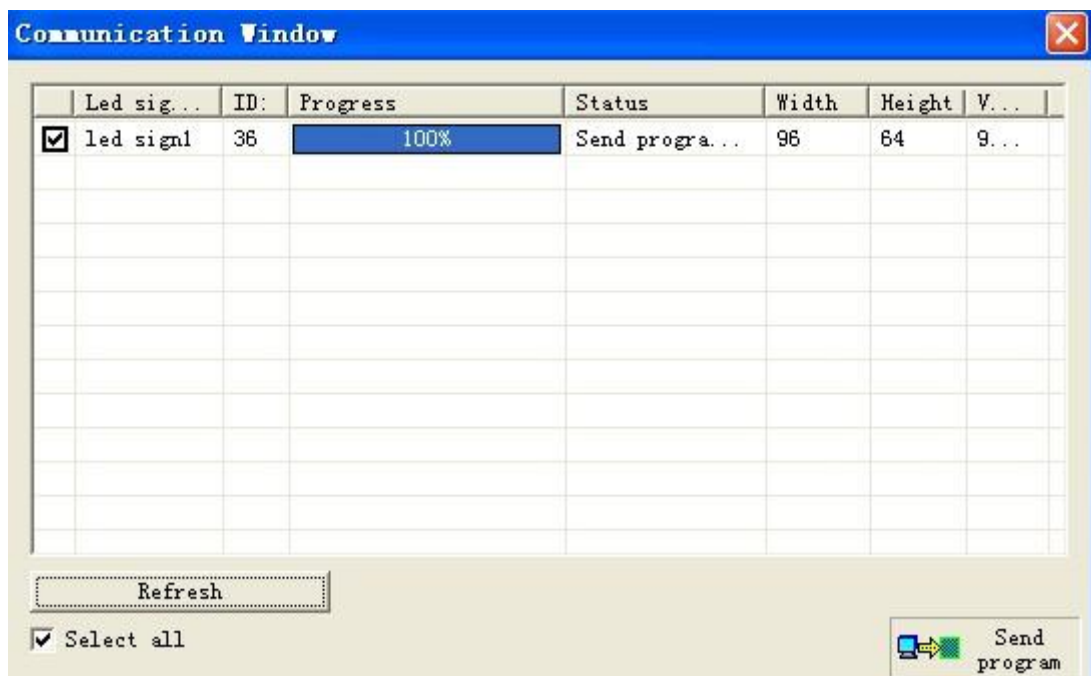
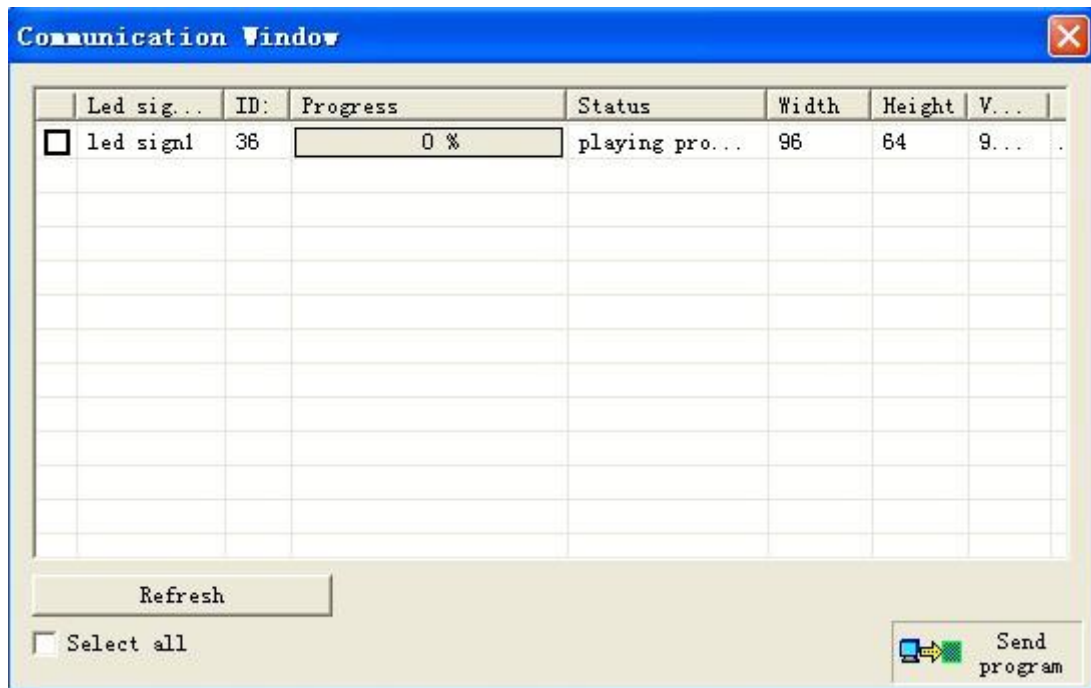
Baud rate: choose 9600, same with that of control card.

Then click on Config ID list, as shown in below:



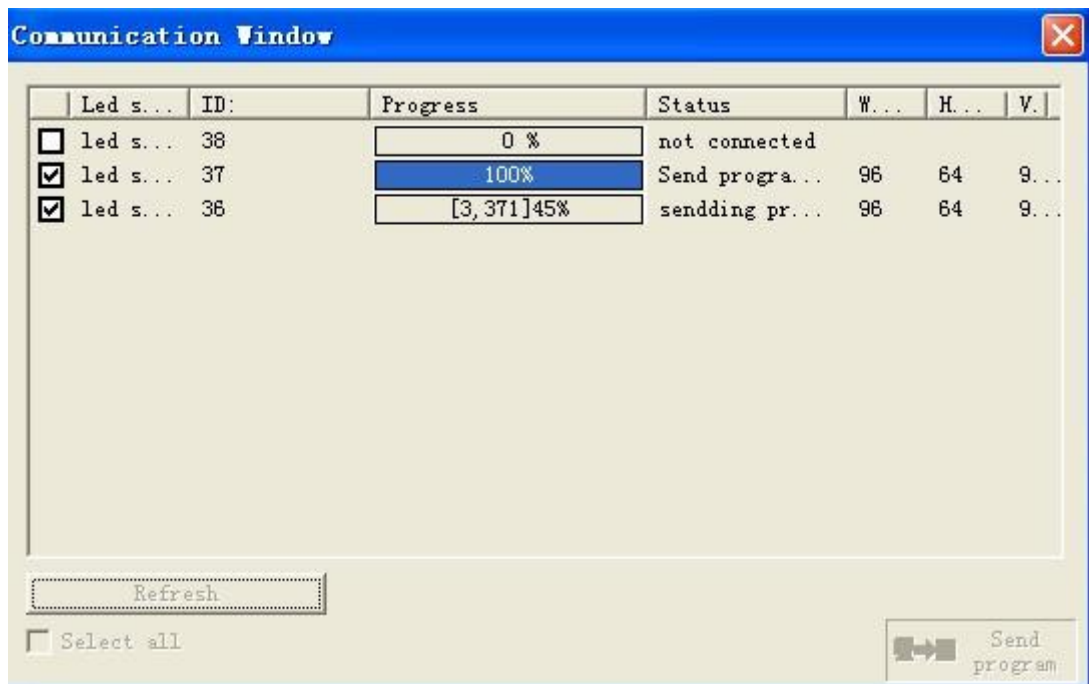
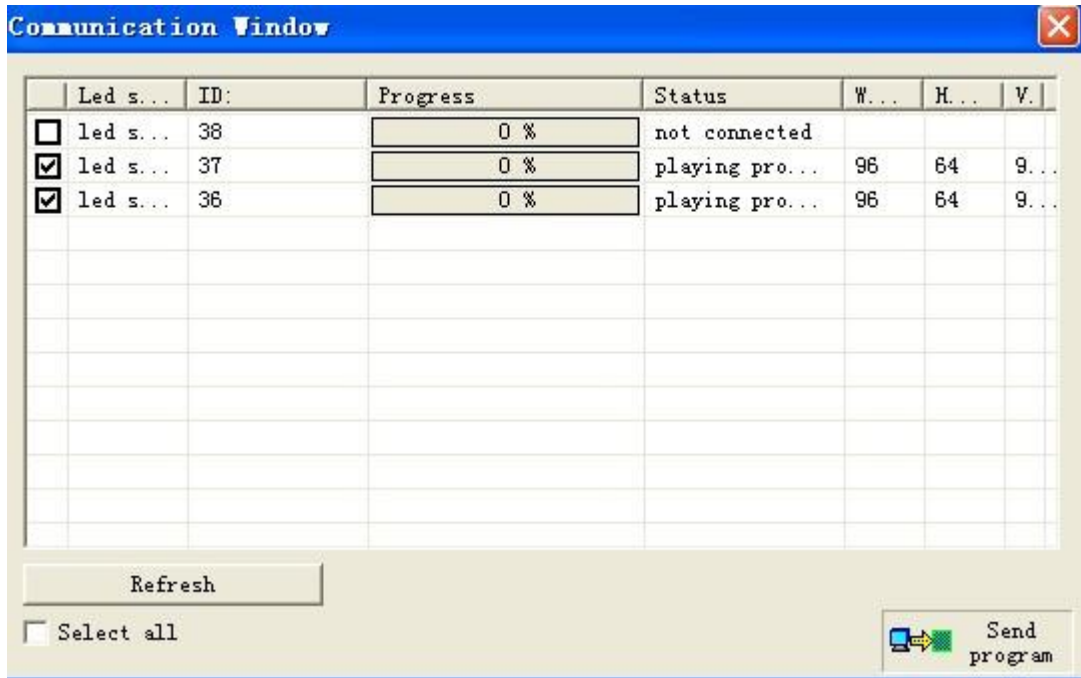
Click on Add button and enter the ID of the control card then press OK button.

Step 4, back to Main interface, make program and click on Send button  then communication window will come out, as shown in below:



Steps of control card 2 and 3 are all the same like control card 1, as shown in below:





For more technical support, please send email to [wh@xixunled.com](mailto:wh@xixunled.com), we will connect you as soon as possible.